

Promodel Player



About Promodel Player

Promodel Player® is a browser plug-in for Microsoft's Internet Explorer® that allows users to view the animation and statistics of a model. You do not need to have ProModel® installed for this plug-in to work--but you do need to have the plug-in installed. To run simulation models using this plug-in, you may invoke the Promodel Player by clicking on a .pkg hyperlink (links provided below), or right click on a file in Windows Explorer and select **Play**.



Please Note

The Promodel Player is compatible with Microsoft Internet Explorer versions 5.0 and above. It is not compatible with any version of Netscape Navigator.

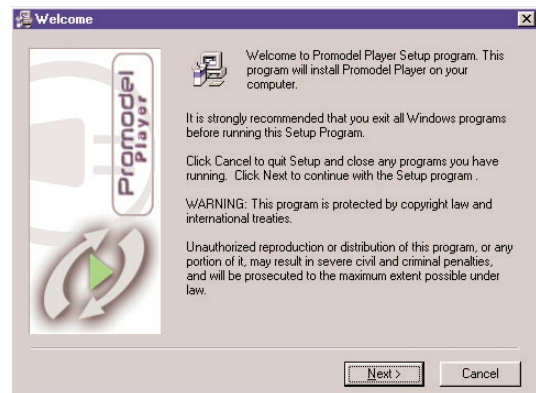


How to Install Promodel Player

Try out the latest Promodel Player plug-in for Internet Explorer by clicking on the "download" graphic below.



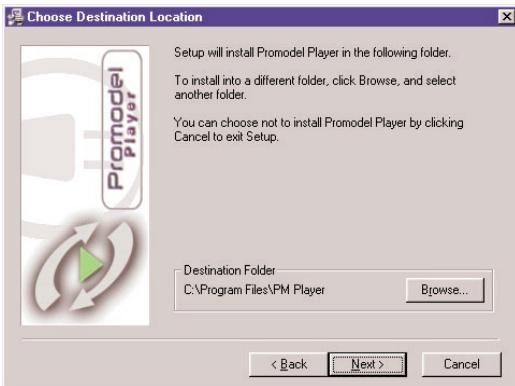
1. Save the setup file to your machine. Run the executable file to begin the installation of the plug-in. The following window will appear; click Next to proceed with the installation.



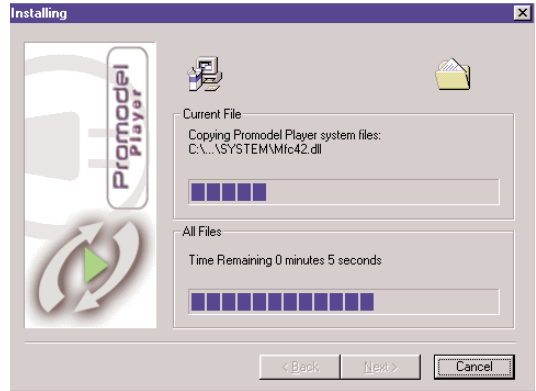
2. You must agree to the terms of the license agreement to continue with the installation.



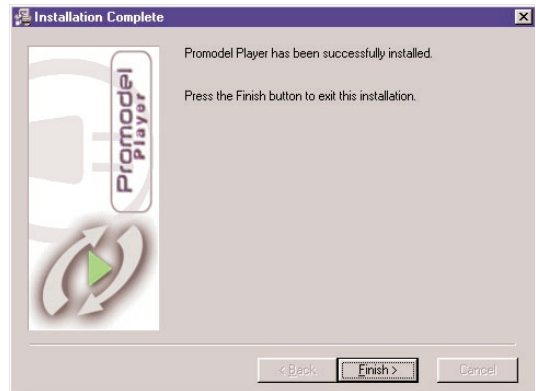
3. You are now ready to install; click Next to begin.



4. The following screen will show the status of the installation process. You can cancel the installation at any time by selecting Cancel.

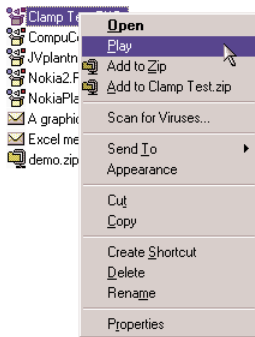


5. When the installation is complete, click Finish to exit the install.



Viewing a Model

After you have downloaded and installed the Promodel Player plug-in, you can begin viewing models through Internet Explorer. To view, or “play,” a simulation model select the model file in Windows Explorer, then **right-click** on the package and select **Play** from the menu that appears.



You may also view models via html links to the desired model package. Model links are available from the PROMODEL website at www.promodel.com. You cannot open Promodel Player independently of selecting a model package.

Click on one of the following model package files to automatically download and load the model into your Promodel Player.



Click on model packages below for Promodel Playing:

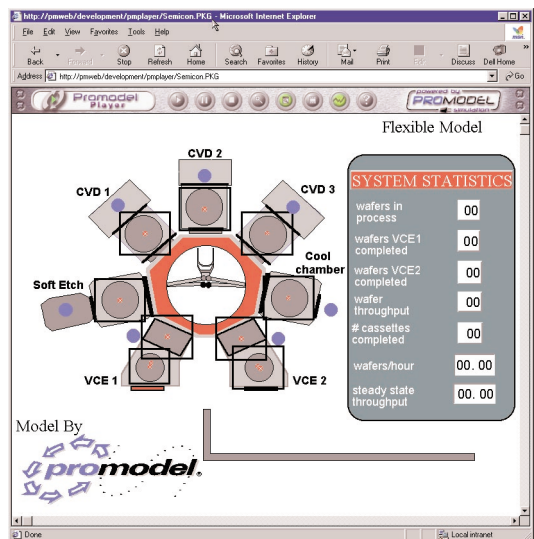
SemiConductor Manufacturing

Other Models

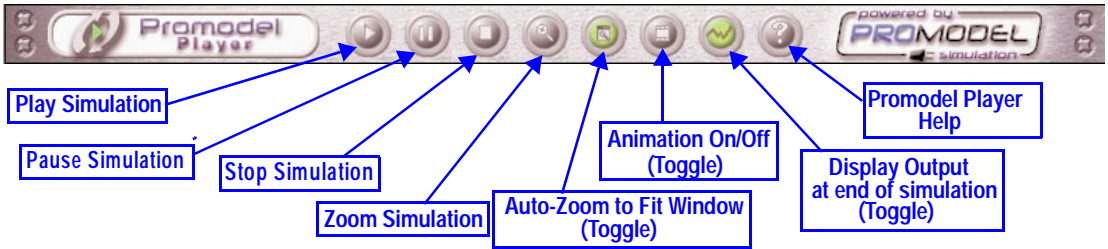
When you click on an html pkg link, a new Internet Explorer window will open and you will see the following image while the package is downloaded



After the model has been loaded, the layout window of the model appears in the main browser window.



The Promodel Player toolbar appears at the top of the layout window.



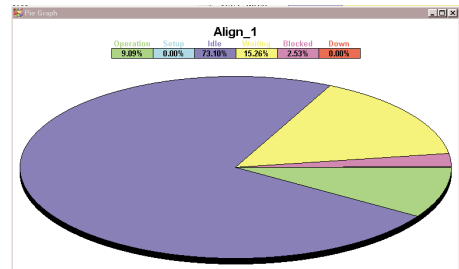
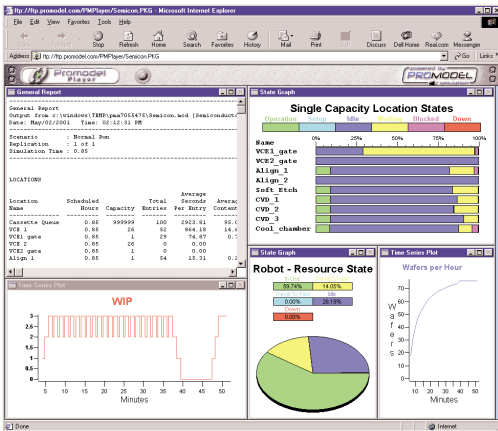
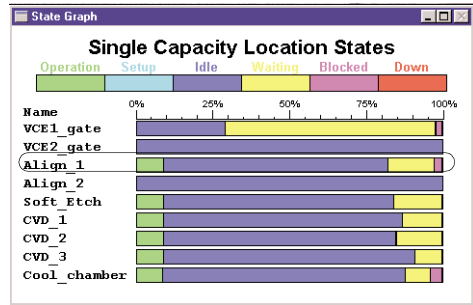
From the left, the buttons are Play, Pause, Stop, Zoom, Auto-Zoom to Fit Window (toggle), Animation On/Off (toggle), View Output (toggle), and Promodel Player Help. The toggle buttons turn green when they have been selected as active.

There is only one control button for the statistical output screen. It allows the user to close the output and go back to the model layout view.



To run the model animation, click Promodel Player's **Play** button. While the animation is running, you can adjust your zoom level, or pan the view. To pan, click on the animation window, hold the mouse button down, and drag the direction you would like to move the layout. If you have selected to view the output, as soon as the simulation is complete, the output statistics and graphs will open in the browser window. Only predefined output graphs will come up, the user cannot define new graphs through Promodel Player. Below is the output from Semicon.pkg which is one of the links included above.

If there are any bar graphs defined, as in the Semicon report, the user can get a detailed pie chart of the individual bar by left-clicking on the bar of the desired statistic.





Please Note

A user who has installed this plug-in, but has not installed any other PROMODEL products will not have access to any of ProModel's model building capability, they may only view the simulation animation and the statistical output results.

